

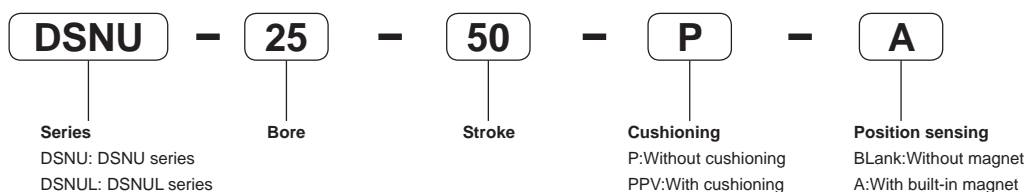
DSNU / DSNUL Series ISO6432 Stainless Steel Mini Cylinder



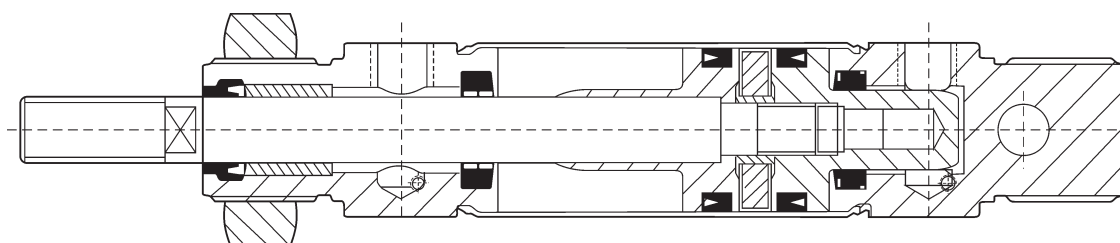
Character

Non touched reaction testing accord with ISO6432 standard cylinder. $\phi 8 \sim \phi 25\text{mm}$

Ordering code



Sectional view



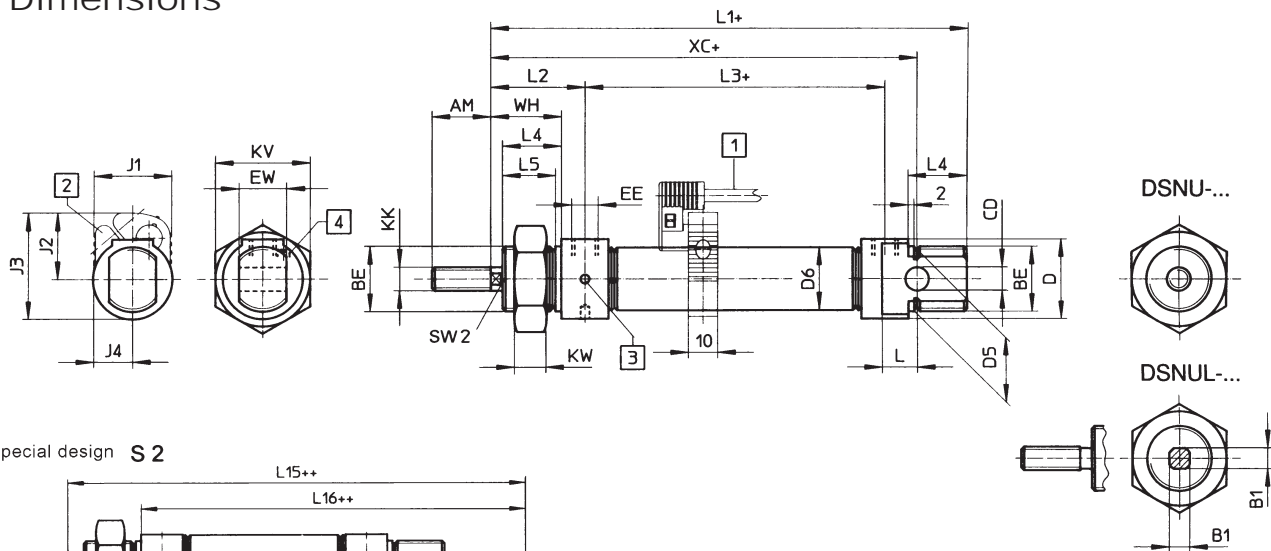


VOGUE PNEUMATICS

Ningbo Vogue Pneumatics Industry Co., Ltd.

DSNU / DSNUL Series ISO6432 Stainless Steel Mini Cylinder

Dimensions



Special design S 2

- 1 Sensor switch
- 2 Accessory
- 3 Wrench's position Port

+ = Plus stroke length
++ = Plus 2 stroke lengths

Bore / Symbol	AM	B1 f8	BE	φ CD	φ D h9	φ D5	φ D6	EE	EW	J1	J2	J3	J4
8	12	-	M12×1.25	4	15	12	9.3	M5	8	20.4	16.5	23.2	13.9
10	12	-	M12×1.25	4	15	12	11.3	M5	8	22	18.2	25.9	13.8
12	16	5.5	M16×1.5	6	20	16	13.3	M5	12	22	20	28.6	11
16	16	5.5	M16×1.5	6	20	16	17.3	M5	12	22.5	22.5	33.2	11
20	20	7	M22×1.5	8	27	22	21.3	G1/8	16	26.5	22.5	35.3	13
25	22	9	M22×1.5	8	27	22	26.5	G1/8	16	31.5	25	40.2	16

Bore / Symbol	KK	KV	KW	L	L1	L2	L3	L4	L5	L15	L16	SW2	WH	XC
8	M4	19	6	6	78	22	34	12	10	78	62	-	16	64
10	M4	19	6	6	78	22	34	12	10	78	62	-	16	64
12	M6	24	8	9	89	28	38	17	15	94	72	5	22	75
16	M6	24	8	9	95	28	44	17	15	100	78	5	22	82
20	M8	32	11	12	112	32	51.6	20	18	116	92	7	24	95
25	M10×1.25	32	11	12	119.5	36	53.1	22	20	125.5	97.5	9	28	104

75

| EXECUTION COMPONENT |

TEL:0086-574-88870283